

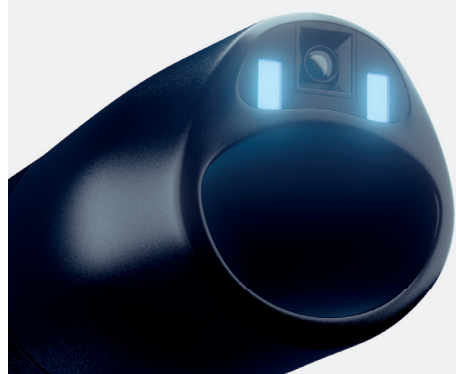
Broncoflex®

Single-use Bronchoscope

BRONCOFLEX®

VORTEX

Ø 5,6
2,8



The Surgical
Company

Specialization through Innovation

BRONCOFLEX® VORTEX

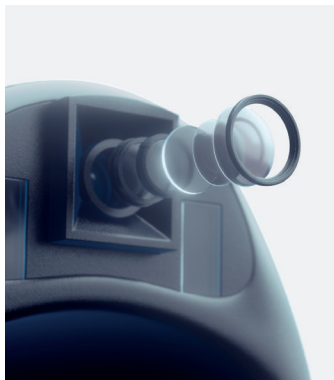
DISTAL NAVIGATION

Its shaped distal tip is narrower than other single-use bronchoscopes with a 2.8 mm working channel. This miniaturisation aids exploration of the distal bronchi, benefiting from the smaller outer diameter of the scope with a wider working channel. The Broncoflex® Vortex can be inserted into endotracheal tubes of 6 mm or more.



ERGONOMICS & MANOEUVRABILITY

Easy-grip handle, very similar to using a reusable endoscope, with identical working channel access and a leak-tight biopsy valve.



HIGH-DEFINITION SYSTEM

The whole system, from the camera to the visualisation platform, contributes to the display of a high-definition image with, in particular, an algorithm especially developed for detailed contours. Brightness management enables good near and distal vision.



SECRETION MANAGEMENT

The wide distal opening forms a suction cone that helps facilitate the suction of secretions and fluids in distal proximity to the endoscope.

TECHNICAL CHARACTERISTICS

OPTICS	Field of vision direction	0°
	Field of vision	87,5°
	Field depth	5-50mm
	Image resolution (pixels)	400x400
	Lighting system	2 LEDs
INSERTION TUBE	High/low deflection angle	200°/200°
	External diameter of insertion tube	5,4mm
	Distal end outer diameter	5,6mm
	Working length	605mm
WORKING CHANNEL	Internal diameter	2,8mm
STERILISATION	Ethylene oxide	
INSTRUMENT COMPATIBILITY	Compatible with intubation tube (internal diameter)	6mm
	Double-lumen tube (internal diameter)	41Fr
REFERENCES	Broncoflex Agile Broncoflex Vortex Screeni HD	20030001 10030001 30030000